

## Lythic™ Protector

Lythic™ Protector is a penetrating concrete sealer formulated to enhance and protect polished concrete floors. It is a unique product that includes colloidal silica for surface hardness and lithium for water repellency.

### Benefits:

- Enhances colored concrete floors
- Increases durability and stain resistance of concrete floors
- Increases slip resistance
- Ease of maintenance and cleaning
- Water based, environmentally friendly product

### Coverage

Approximately 1,500 to 2,000 sq. ft. / gal.

### Preparation

Complete all floor prep including densification, coloring, and polishing before applying Lythic™ Protector. Clean floor to remove dust and debris. The surface should be completely clean and dry before application.

### Application methods



Apply a light mist from a pump sprayer. Using a damp micro fiber or a flat cotton pad applicator, spread Lythic™ Protector in a thin film coating using a “figure 8” motion to reduce streaking and to prevent puddling. A second coat should be applied after the first is tack free. Work leaving

a wet edge and work in areas bordered by joints or natural breaks. High speed burnishing using a fiber pad (red or black), or hogs hair pad, will further enhance the finished surface.

### Precautions

Cure finished floor for 24 hours before allowing regular foot traffic. Do not allow standing water to remain on the surface for the first 48 hours.

Lythic™ Protector is intended for interior use and will not withstand UV exposure.

Use **Lythic™ Cleaner** floor cleaner to maintain.

### Contact Us

For more information on how to specify Lythic™ Solutions products and where to find qualified applicators, contact Lythic™ Solutions, Inc. (360) 694-5347 | info@Lythic.com | [www.Lythic.com](http://www.Lythic.com)

## Lythic™ Cleaner

Lythic™ Cleaner is a non-corrosive cleaner, formulated to remove surface dirt and soil from concrete floor surfaces. It fortifies concrete surfaces with amorphous silica as it cleans to increase durability and maintain surface polish.

### Benefits:

- Safe, non-corrosive concentrate
- No rinsing required
- Increases durability of polished floors
- Fortifies concrete floors with colloidal silica
- Water based, environmentally friendly product

### Preparation



Dry mop or sweep areas to remove dust and surface debris. Gum and other larger residue should be scraped off the floor before cleaning.

### Application methods:

Mix 4 ounces of concentrated Lythic™ Cleaner to a gallon of water. For heavy dirt and grease, increase ratio to as much as 8 ounces per gallon. Lythic™ Cleaner is designed for use

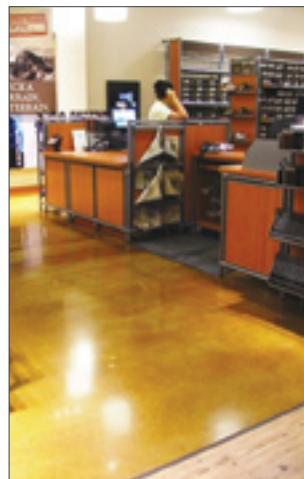
with “auto scrubber” machine cleaning. Increase dwell time on heavily soiled areas.

Mop applications require a separate rinse water bucket to clean the mop as it applies Lythic™ Cleaner. Frequent replacement of clean water is required to maintain effectiveness of this method.

No rinsing is required for either cleaning method.

### Precautions:

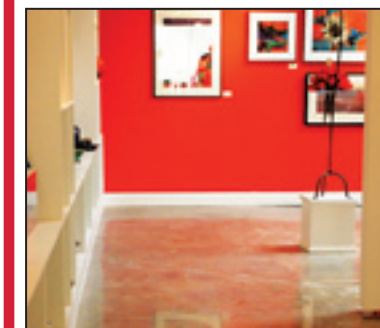
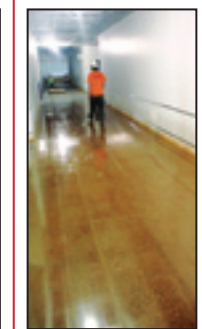
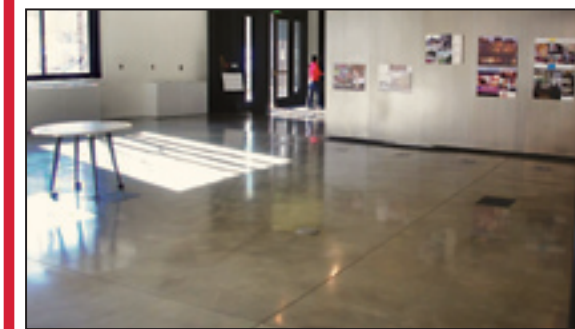
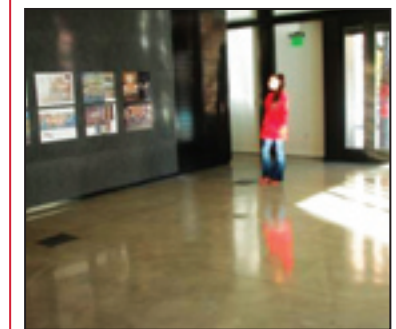
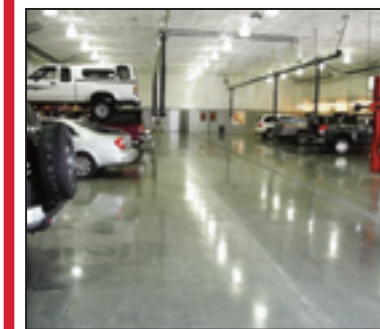
Use Lythic™ Cleaner as directed.



All Lythic™ products increase the strength and durability of concrete with each application. Utilizing colloidal silica, Lythic™ Densifier improves concrete as it bonds quickly and cleanly with calcium hydroxide components in all concrete.

Whether densifying at the time of placement, or as part of a polishing process, Lythic™ Densifier is the most cost effective way to harden and increase abrasion resistance of a concrete surface.

Lythic™ Protector and Lythic™ Cleaner support and fortify applications of Lythic™ Densifier when used in ongoing care and maintenance programs.



# Lythic™ Solutions

## Colloidal Silica Nano Technology

*The Difference in Densifiers™*



# Lythic™ Densifier

## Product Description

Lythic™ Densifier is a blend of inorganic polymer materials that penetrates slab concrete to increase surface density and hardness. Utilizing a proprietary and “green” manufacturing process, Lythic™ Densifier’s unique formulation of uniform, concentrated, Nano sized particles, suspended in an ultra low surface tension liquid, penetrates deeply into concrete surfaces bonding with the cement components of the slab. Lythic™ Densifier makes an extremely hard, dense floor surface that has increased wear resistance to foot and fork lift traffic. It is water based and environmentally friendly and is VOC compliant in all states.



## Primary Applications

- Interior or exterior concrete
- Warehouses/Distribution center floors
- Manufacturing plants
- Medical and Research
- Residential garages and floors
- Commercial floors

## Features/Benefits

Fills porosity/capillaries of concrete creating a permanent bond that makes floors and walls harder, less prone to dusting and absorption of most liquids.

- Meets all VOC regulations including California
- Meets LEED qualifying standards
- Resists penetration of many liquids including oils and many chemicals
- Helps minimize many rubber tire marks in warehouse applications
- Application equipment may be cleaned with water
- Will not discolor or blush over time
- Not affected by bond breaker systems when used as directed
- Will not leave a white cast on floor if over used or not removed
- Reduces operating costs by increased ease of maintenance and cleaning

## Performance Advantages

- Lower pH improves reactivity and stability of materials
- Low viscosity and smaller molecular size provides deeper and more complete penetration
- Will not peel
- Reduces dusting
- Can be applied to newly troweled green slabs

## Packaging

- 5 gallon pails (19L)
- 55 gallon drums (209L)

## Technical Information

- Drying Time ..... 20 min to 1 hour
- VOC Content ..... 0 g/l
- Total Solids ..... 18%
- Active Ingredients ..... 100% of total solids
- pH ..... 9



- Freeze Point ..... 32°F
- Slip Resistance ..... Does not change floor friction coefficient
- Shelf Life ..... 1 year
- Coverage ..... 500 sq. ft. / gal

## Application/Directions

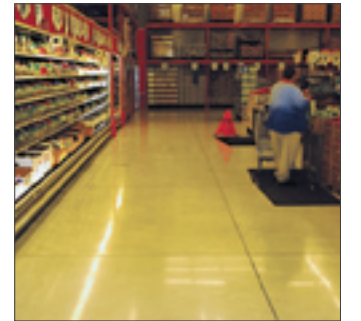
Lythic™ Densifier has two primary methods of application. The first method is designed for application while the slab is still green just after final trowel. The second is designed for use with existing or cured concrete.

## Existing, Cured Concrete

Lythic™ Densifier can be applied to concrete of any age. Surface must be clean and structurally sound. Surface also must be clear of membrane forming curing compounds, sealers, oils, dust and other surface contaminants. For best results use a black scrubbing pad with Lythic™ Cleaner. If more aggressive surface preparation is needed to remove surface contaminants, 60-100 grit sanding screens can be used. A thorough cleaning is needed after additional scrubbing

**Diamond grinding/polishing to an 800 grit finish with Lythic™ Densifier, will provide the most durable and stain resistant floor surface.**

Use a low pressure sprayer to apply Lythic™ Densifier to form an even sheen across surface to ensure complete saturation of surface. Apply enough Lythic™ Densifier to keep the surface wet for 15 to 20 minutes. Let surface dry 1 hour before heavy traffic.



## New Concrete (Green)

Lythic™ Densifier may be applied to newly installed concrete after final trowel while slab is still Green. Slab must be clean and free of all materials such as curing compounds, bond breakers, form release oils or construction dust and debris, etc. Use a low pressure sprayer to achieve a consistent, even application and to ensure consistent coverage of the surface. Re-apply as necessary to keep surface wet for 20 minutes. Let surface dry. No cleaning, flooding, neutralizing or rinsing is necessary. If curing agent is to be applied, it can now be applied over dried application of Lythic™ Densifier.

## Clean-Up

Clean tools and equipment with water immediately after use. Residue from application and clean-up is non-toxic. Protect metals, glass, wood, paint or brick from contact with Lythic™ Densifier. If surface is accidentally over sprayed, wash immediately with potable water.

## Maintenance

Routine sweeping, mopping and periodic mechanical scrubbing with a neutral pH, non-rinsing cleaner or water is needed. We recommend using Lythic™ Cleaner for all cleaning regimes. Avoid any acidic cleaners. Acidic cleaners may etch the surface over time and cause a dulling of the finish. No aggressive scrubbing brushes such as straogrit, nylogrit or other aggressive scrubbing brush should be used. Avoid detergents containing hydroxides or sulfates.

## Warranty

When applied as directed, Lythic™ Densifier will reduce abrasion and wear to the surface of the concrete. Regular sweeping and cleaning of the concrete surface with Lythic™ Cleaner will maintain its performance and increases longevity. If applied by a certified applicator, Lythic™ Solutions warranties Lythic™ Densifier to penetrate and chemically strengthen the surface of concrete to reduce dusting for 10 years.

This warranty does not cover incidental or consequential damages nor does it cover failure of mix design, penetrating curing compounds, cracking or conditions that are a result of poor concrete finishing. Damage from faulty maintenance procedures or accidental damage to the slab is not covered.